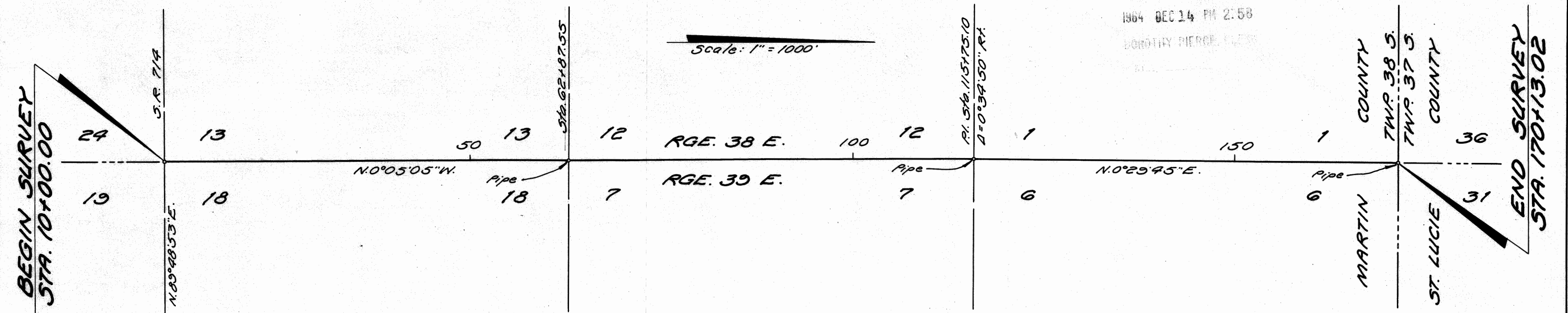


File No. 104590

FILED & RECORDED
IN MARTIN COUNTY, FLA.
1964 DEC 14 PM 2:58
DOROTHY PIERCE, CLERK



We, Ralph Davis, as Executive Director of the State Road Department of the State of Florida, and F.K. Strickland, as Secretary of the State Road Department of the State of Florida, do hereby certify that this map is the Official Map of Location and Survey of a portion of Section 89001, designated as a part of State Road 5-609 in Martin County, Florida: Said portion of Section 89001 extending from State Road 714 Northerly to St. Lucie County Line.

Filed for record in the Office of the Clerk of the Circuit Court for the County of Martin, State of Florida, in Map Book 4, Page 39, on the 14 day of December, A.D. 1964.

Prepared and adopted by the State Road Department of the State of Florida under provisions of Section 335.02, Florida Statutes of 1955.

Ralph Davis
Executive Director, State Road Department

Attest: F.K. Strickland
Secretary, State Road Department

Approved: [Signature]
Engineer of Rights of Way
Date: November 19, 1964

Dorothy Pierce
Clerk of the Circuit Court
Martin County, Florida